



INTERNAL SYSTEMS

# EVOLUTION COMPLETE CAVITY UNIT

## IMPROVED PERFORMANCE

THE CAVITY UNIT HAS EVOLVED

- ✓ EFFORTLESS OPERATION
- ✓ SOFT CLOSING TECHNOLOGY
- ✓ ONE TOUCH TO RELEASE DOOR
- ✓ HOLDS DOOR FLUSH IN CAVITY

The Evolution Complete is the perfect flush cavity sliding door system. Hume Doors have designed the Evolution Complete to incorporate our one touch release and soft closing technology, allowing for the most effortless operation of any sliding door system. The one touch release is magnetised and will hold your door firmly inside the cavity. With one easy touch the spring-loaded system will release the door, sliding with ease across the opening while the soft closer will gently slow and close the door.





# INTERNAL SYSTEMS CAVITY UNITS

■ Cavity Units are recommended for 35mm doors only



Scan QR-code for Cavity installation video



FEATURES	EVOLUTION TIMBER	EVOLUTION TIMBER COMPLETE	EVOLUTION STEEL CAVITY (ASPIRE)	EVOLUTION STEEL COMPLETE (ASPIRE)
Smooth 4 Wheel Ball Bearing Carriages	✓	✓	✓	✓
Jump free U track - Smooth operation	✓	✓	✓	✓
Quick release mechanism	✓	✓	✓	✓
Maximum door mass 70kg	✓	✓	✓	✓
Same architrave height as a hinged door	✓	✓		
One Touch Release System		✓		✓
Soft Closer Technology		✓		✓
Tough Composite Split Jamb			✓	✓
Galvanised steel back posts slats & track - Termite resistant			✓	✓

CAVITY UNITS	Standard Size (mm)	Stud Thickness (mm)	
EVOLUTION TIMBER	2040x620/720/770/820	70/75/90/100	336
	2040x870	70/75/90/100	349
	2040x920	70/75/90/100	417
	2340x620/720/770/820	90/100	609
	2340x870	90/100	621
	2340x920	90/100	693
	Custom Size up to 2340x919	90/100	714
	Custom Size from Min 2340x919 - Max 2400x1200	90/100	789
EVOLUTION TIMBER COMPLETE	2040x620/720/770/820	70/75/90/100	443
	2040x870	70/75/90/100	457
	2040x920	70/75/90/100	513
	2340x620/720/770/820	90/100	718
	2340x870	90/100	730
	2340x920	90/100	802
	Custom Size up to 2340x919	90/100	822
	Custom Size from Min 2340x919 - Max 2400x1200	90/100	897
EVOLUTION STEEL (ASPIRE)	2040x620/720/770/820	64/70/90	406
	2040x870	64/70/90	440
	2040x920	64/70/90	503
	Custom Size	64/70/90	P.O.A.



EVOLUTION TIMBER CAVITY UNIT OPENING SIZES

**A** = Door height + 70mm (QLD, WA)

**A** = Door height + 80mm (NSW, VIC, ACT, SA, TAS)

**Flush Pull opening width:**



**B** = 2 x Door + 10mm

• Flush pull the door protrudes 50mm)

**Flush Jamb opening width:**



**B** = 2 x Door + 60mm

• (Flush jamb the door is flush with split jamb)

■ Evolution Steel Complete (Aspire) P.O.A.


■ Evolution Steel Cavity with 64mm stud suits 13mm sheeting material only



# INTERNAL SYSTEMS CAVITY UNITS ADDITIONAL EXTRAS

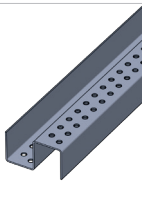
Additional Extras	
Soft Closer	Additional \$74
Evolution Touch	Additional \$43
Closing Jamb	Additional \$68
Cavity Track Door Stop - For double cavity application	\$46 each
Double Adaptor Kit - For double cavity application	P.O.A.
Cavity Guide	\$13 a pair
Meranti Staingrade upgrade	Additional \$104
Timber Pelmet to suit double Cavity Unit	P.O.A.

- For more extras refer to page 54
- Cancellations or alterations for made to order Cavity Units will only be accepted on the day of ordering



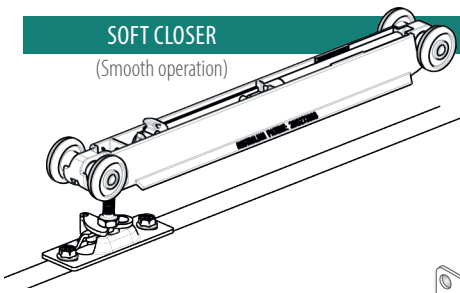
**DOOR STIFFENER**


Door stiffeners protect Cavity doors from warping. Reduces warping by strengthening the door construction.



■ ADD ON OPTIONS FOR EVOLUTION TIMBER & EVOLUTION STEEL

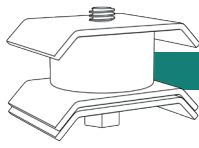
**SOFT CLOSER**  
(Smooth operation)



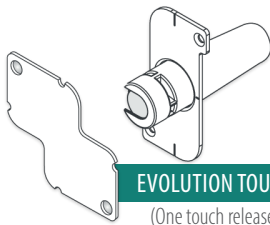


Scan QR-code for Soft Closer installation video

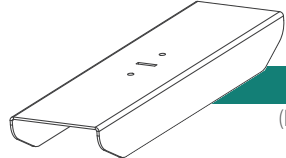
**CAVITY TRACK DOOR STOP**  
(For double cavity application)

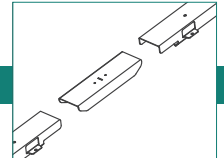


**EVOLUTION TOUCH**  
(One touch release)



**DOUBLE ADAPTOR KIT**  
(For double cavity application)







# INTERNAL SYSTEMS EVOLUTION PREMIUM



## Floor to ceiling zero clearance Cavity Unit

- Floor to Ceiling Zero Clearance
- Creates large open living spaces
- Impressive large door openings
- Virtually invisible - hidden track system
- Soft closer - prevents door slamming
- One touch operation - push to release door

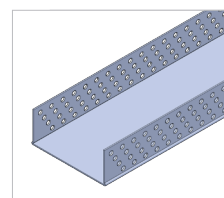


Every Evolution Premium unit is a fully customised solution

To download the order form go to [www.humedoors.com.au/door-systems](http://www.humedoors.com.au/door-systems) and look for Evolution Premium Floor to Ceiling Cavity Unit.

IMPORTANT INFORMATION FOR PREMIUM CAVITY UNIT	
Maximum Door Size	3000x1300mm
Maximum Door Weight	120kg
Stud Thickness	90mm
Soft Closer	Included as standard
Overall Unit Height	Floor level (slab/sheet) to underside of ceiling + 50mm
Overall Unit Width	Door Width x 2 + 50mm
Door Height Calculation	Finished floor to underside of ceiling less 15mm for clearances
Clearances	Under Door = 10mm Above Door = 5mm (Standard) (Can be adjusted to minimum 3mm)

- Door & Cavity should be ordered together for system operational purposes
- Cancellations or alterations for made to order doors will only be accepted on the day of ordering



### SQUARE SET REVEALS

Cavity Square Set Reveals provide a modern, clean wall finish by replacing timber architraves and timber closing jamb.